

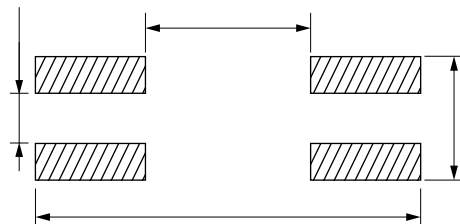
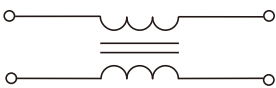
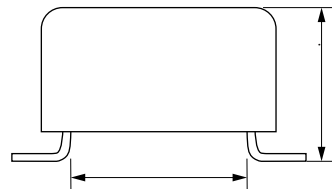
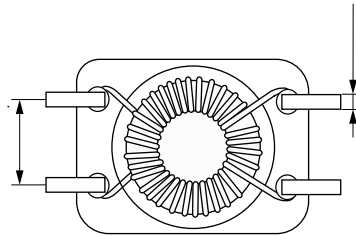
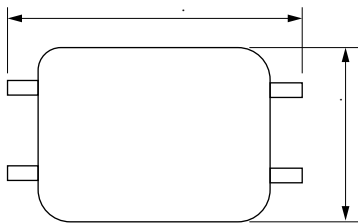
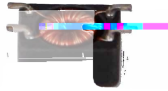
# SCM Series

## FEATURES

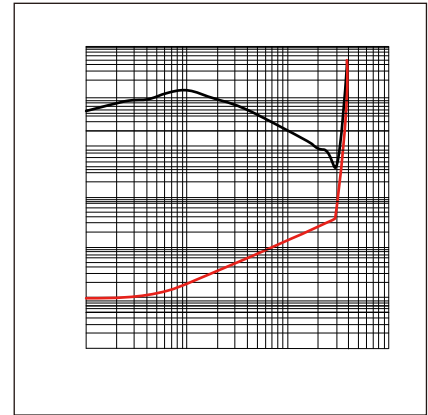
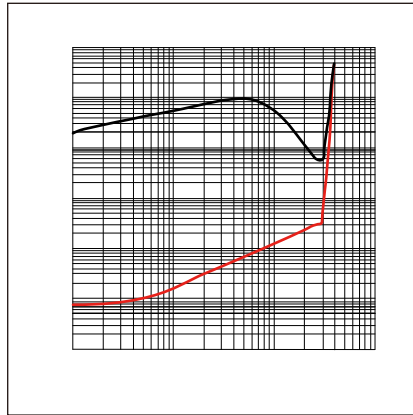
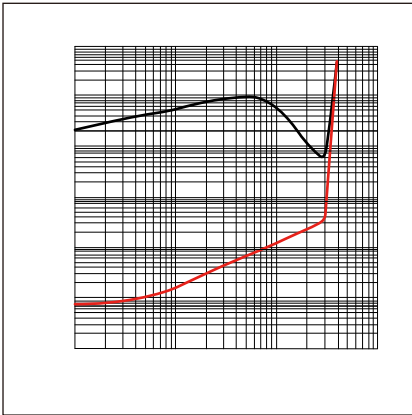
- 
- 
- 
- 

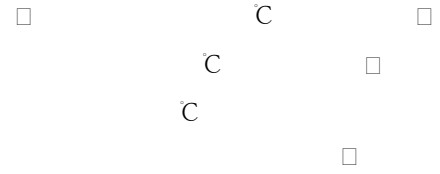
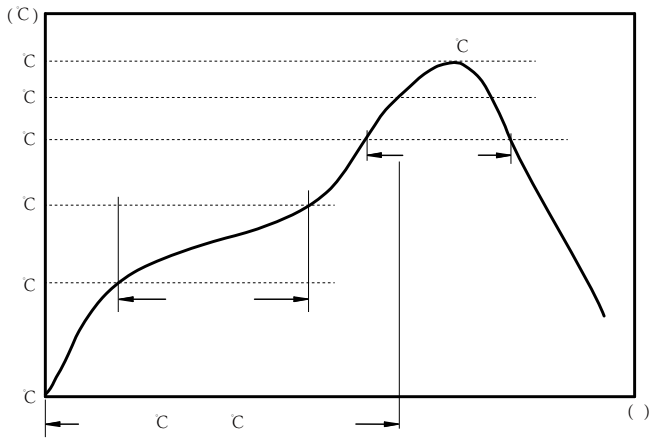
## APPLICATION

- 



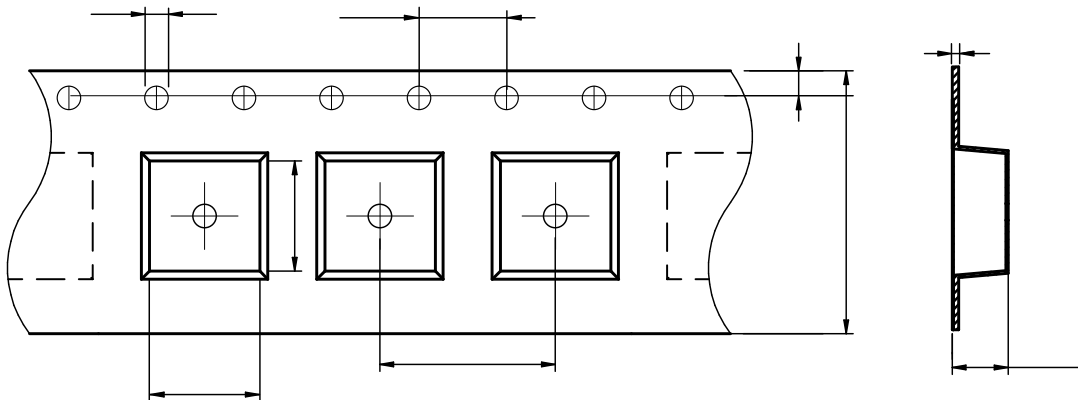






□

:

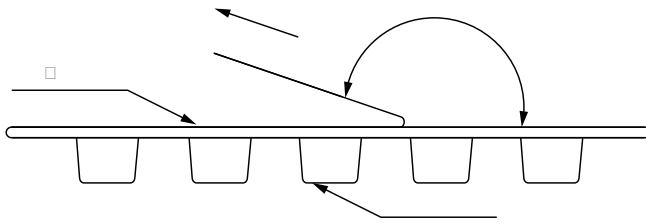


SCM9040	$5.85 \pm 0.1$	$9.60 \pm 0.1$	$1.5 \pm 0.1$	$4.0 \pm 0.1$	$8.0 \pm 0.1$	$16.0 \pm 0.3$	$4.92 \pm 0.1$	$1.75 \pm 0.1$	$0.50 \pm 0.05$

□

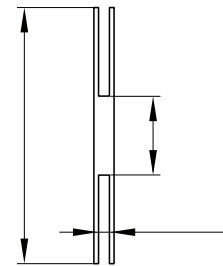
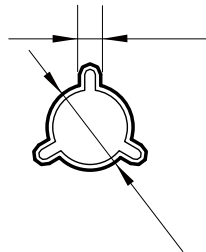
Marking	Printing (Inductance)
---------	-----------------------

□ □

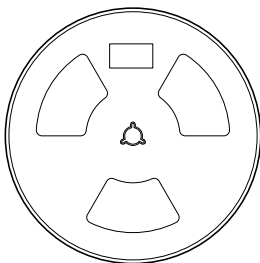


The peel force of top cover tape shall be between 0.1 to 1.17 N

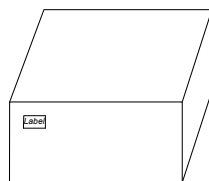
:



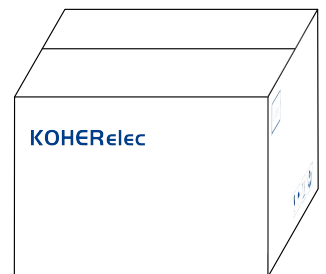
□



1500 Pcs/Reel



3 Reel /Inner box( 4500 Pcs)



3 Inner box/Carton box( 13.5K Pcs)

