

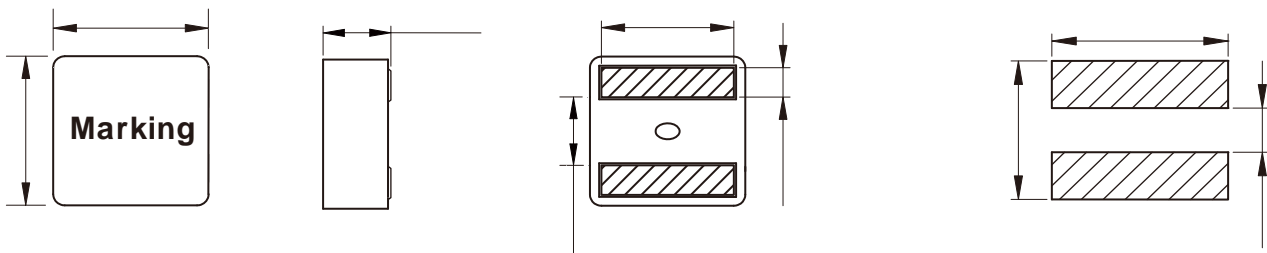
# MDTE Series

## FEATURES

- So saturation
- High current, low DCR, high efficiency
- Very low acoustic noise and very low leakage flux noise
- High reliability
- 100% Lead (Pb)-Free and RoHS compliant
- Operating temperature -55~+125°C (Including self-temperature rise)
- Quantity: 2000pcs

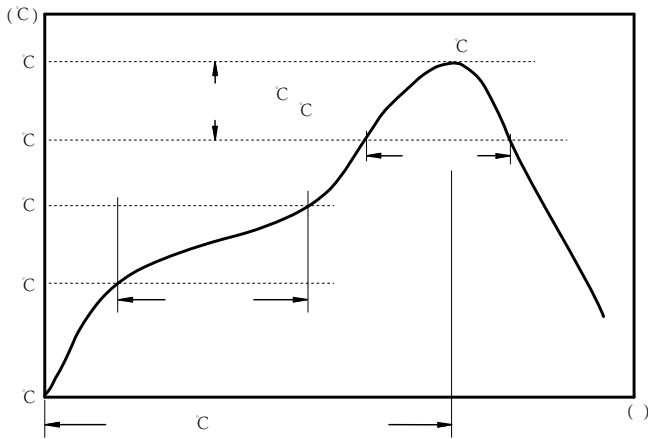
## APPLICATION

- Note PC power system, incl. IMVP-6
- DC/DC converter

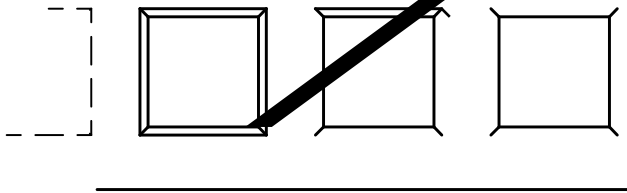


Part No	Inductance @ 100KHz/0.1V	Tolerance	Current Typ.	Current Max.	Temperature Rise Current Typ.	DC Resistance Max.
MDTE5030-R15M	0.15	±20%	36.0	32.5	22.2	2.31
MDTE5030-R16M	0.16	±20%	35.0	32.0	22.2	2.33
MDTE5030-R33M	0.33	±20%	28.0	26.0	19.2	3.52
MDTE5030-R47M	0.47	±20%	26.0	24.0	18.4	4.13
MDTE5030-R56M	0.56	±20%	22.2	20.2	17.7	4.52
MDTE5030-R60M	0.60	±20%	22.0	20.0	17.7	4.52
MDTE5030-R80M	0.80	±20%	20.0	18.0	13.1	5.65
MDTE5030-R82M	0.82	±20%	19.7	17.6	12.9	5.78
MDTE5030-1R0M	1.00	±20%	16.5	14.3	12.2	7.60
MDTE5030-1R2M	1.20	±20%	15.0	13.5	11.0	9.70
MDTE5030-1R5M	1.50	±20%	14.0	12.5	10.5	11.
MDTE5030-1R8M	1.80	±20%	12.3	11.3	10.1	2
MDTE5030-2R2M	2.20	±20%	10.0	9.00	9.70	
MDTE5030-3R3M	3.30	±20%	9.50	8.70	8.10	11.0
MDTE5030-4R7M	4.70	±20%	8.20	7.00	5.90	

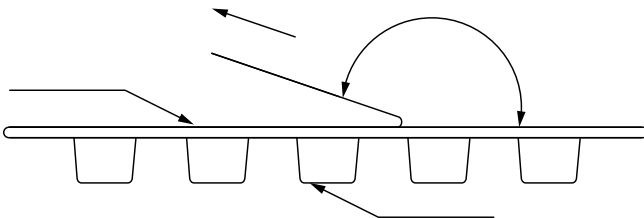




:



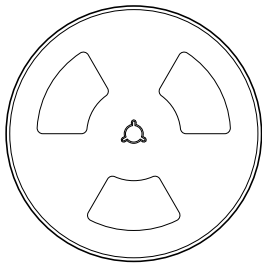
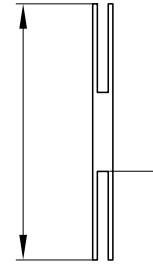
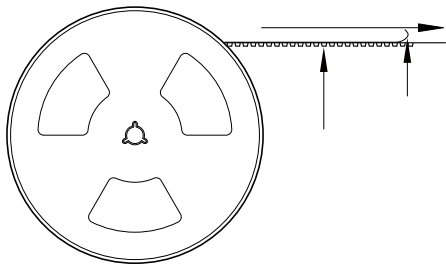
MDTE5030	$6.0 \pm 0.1$	$5.7 \pm 0.1$	$1.5 \pm 0.1$	$4.0 \pm 0.1$	$8.0 \pm 0.1$	$16.0 \pm 0.3$	$3.3 \pm 0.1$	$1.75 \pm 0.1$	$0.35 \pm 0.05$
----------	---------------	---------------	---------------	---------------	---------------	----------------	---------------	----------------	-----------------



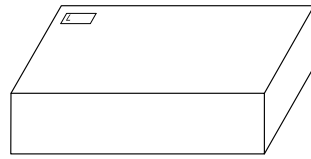
The peel force of top cover tape shall be between 0.1 to 1.3 N

Marking	Printing (Inductance)
---------	-----------------------

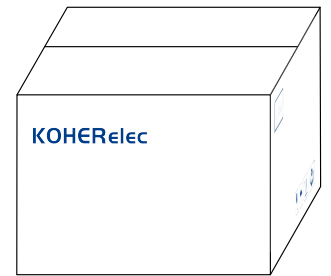
:



2000 Pcs/Reel



3 Reel /Inner box(6000 Pcs)



3 Inner box/Carton box(18K Pcs)

:

- 
- 
- 
- 
- 
- 
- 
- 
-