

MDA Series

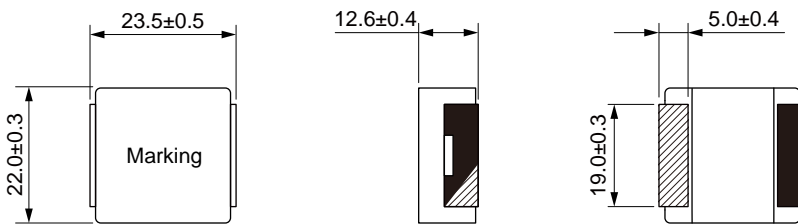
SMD Low Profile High Current Molded Inductor

Size 2313

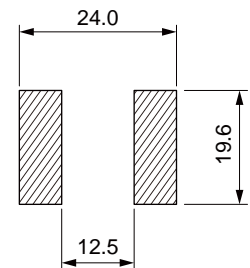
FEATURES

-
- Capable of corresponding high frequency .
- Low loss realized with low DCR.
- High performance (Isat) realized by metal dust core.
-
- 100% Lead(Pb)-Free and RoHS compliant.
-
-
-

Dimensions: [mm]



Land Pattern: [mm]



Electrical Properties:

Part No	Inductance @ 100KHz/1V (μH)	Tolerance	Temperature Rise Current Typ. (A)	Saturation Current Typ. (A)	DC Resistance Typ. (mΩ)	DC Resistance Max. (mΩ)
MDA2313-1R0M	1.00	±20%	70.0	60.0	0.80	0.95
MDA2313-1R5M	1.50	±20%	62.0	52.0	1.00	1.15
MDA2313-2R2M	2.20	±20%	58.0	48.0	1.05	1.25
MDA2313-3R3M	3.30	±20%	49.0	41.0	1.50	1.75
MDA2313-4R7M	4.70	±20%	47.0	38.0	1.90	2.20
MDA2313-6R8M	6.80	±20%	40.0	36.0	2.70	3.10
MDA2313-100M	10.0	±20%	33.0	28.0	3.80	4.15
MDA2313-150M	15.0	±20%	26.0	23.0	5.10	6.12
MDA2313-220M	22.0	±20%	22.0	15.0	9.20	11.0
MDA2313-330M	33.0	±20%	19.0	12.0	13.5	15.4
MDA2313-470M	47.0	±20%	17.0	12.0	17.3	20.8

Part No	Inductance @ 100KHz/1V (μH)	Tolerance	Temperature Rise Current Typ. (A)	Saturation Current Typ. (A)	DC Resistance Typ. (mΩ)	DC Resistance Max. (mΩ)
MDA2313-680M	68.0	±20%	14.0	12.0	26.2	29.5
MDA2313-820M	82.0	±20%	12.0	9.0	31.0	34.2
MDA2313-101M	100	±20%	11.0	9.0	36.0	40.0

Saturation Current will cause L to drop approximately 30%

Temperature Rise Current: The actual value of DC current when the temperature rise is $\Delta T=40^{\circ}\text{C}$

Typical Electrical Characteristics:

